

WHAT MAKES THEM SPECIAL?

"Quality first"

- Fully galvanized door, including the "hidden" parts
- Made of "Sendzimir" processed hot-galvanized sheet metal
- Corrosion protection also provided along cut edges of the metal sheets
- Painted with epoxy-polyester thermoset powders in a 180 degrees (Celsius) oven
- Substantial paint layer (70 microns plus)
- Optimal corrosion resistance demonstrated by 500 hour salt-fog test
- Unaffected by severe climate changes, demonstrated by 2000 hours with +60° to -10° cycles at 75% humidity
- Finishing with high-quality aesthetics
- Orange skin anti-scratch structured paint
- Customizable with wide selection of RAL colors

"Practicality of use"

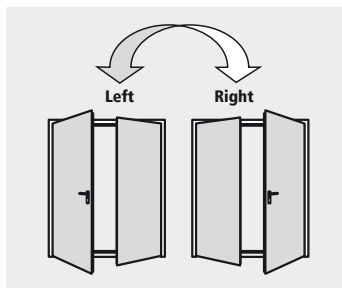
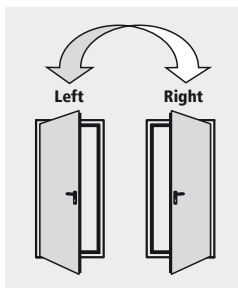
- Door reversibility*
- Indication of door opening direction not necessary
- Reduction of stock for retailers
- Simplifies choices for end-customers
- Multiple installation methods for each door
- Type approvals for anchors for mortar fixing or expansion screws

"Conformity to standards"

- In-house Ninz R&D with specialized testing equipment
- Fire testing in accordance with UNI 9723 and EN 1634-1
- Mechanical testing for the **CE** marking of accessories
- **CE**-marked door accessories studied and sized to meet standard European requirements
- Careful selection of materials and manufacturing methods
- Strict product testing for conformity to declared technical standards
- Absolute functional certainty over time
- Doors "type approved" in compliance with M.D. 21 June 2004
- Products delivered with the documentation required by current regulations

"Manufacturing technology"

- Manufacturing in modern and functional facilities which employ the latest technologies to maintain high quality levels and product uniformity
- The entire production process - from raw materials to painted and packaged products - takes place inside Ninz's own facilities, ensuring a 360 degree door control



One-leaved doors available in the following classes:

EW 60 EI₂30 EI₂60 - Sm - C5 EI₂90 REI 60 REI 120



Two-leaved doors available in the following classes:

EI₂60 - Sm - C5 EI₂90 REI 60 REI 120



*except in combination with certain optional accessories

NOTE

The colors represented in the photos are not standard.

STANDARD ELEMENTS

which comprise Univer fire doors:

Door leaf

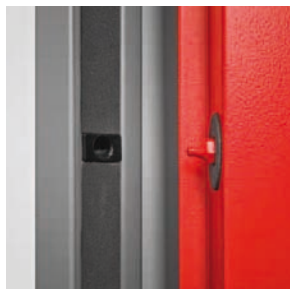
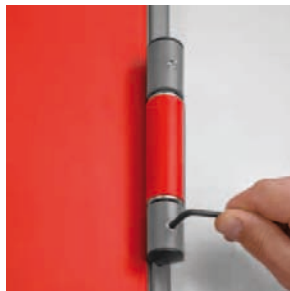
- Made of "Sendzimir" processed hot-galvanized sheet metal, press folded and electro welded
- Perimetral rebate on 4 sides
- Internally reinforced with hot-galvanized steel profiles
- Heat-insulated with treated mineral wool
- Internal stiffeners for overhead door closer and panic bar
- 50 or 60 mm thickness, depending on fire rating

Doorframe

- Made of "Sendzimir" processed hot-galvanized sheet metal
- Grooves for thermo expansive sealing and rebate sealing
- Suitable for anchors for mortar fixing or expansion screws
- Detachable rebate for application on finished flooring
- Removable threshold for thresholdless installation (except for doors with environmental characteristics)
- Strike plates in black plastic for lock bolt and safety bolts
- Assembled doorframes for one-leaved doors
- Assembly required for two-leaved doorframes

Thermo expansive sealing

- Mounted on vertical doorframe profiles and central vertical profiles on two-leaved doors
- For on-site mounting on the doorframe's upper cross-beam
- Mounted above and below the EI₂90 and REI 120 leaves



Hinges

- Nr. 2 three-wing hinges for each leaf
- of which one ball-bearing hinge with screws for vertical adjustment of the leaf, **CE** marked as per EN 1935, classified for up to 160 kg load, 200.000 cycles durability, suitable for fire door use
- and one hinge with self-closing spring

Safety bolts

- Nr. 2 safety bolts on hinge side leaf edge

Locking mechanism

- Reversible locking mechanism with bolt and central lock
- **CE** marked in conformity with EN 12209 standard
- Insert with patent key, Euro profile cylinder ready

Handle

- Fire rated handle in black plastic with steel core
- Steel installation plate with cylinder hole
- Backplate in black plastic
- Fastener screws and patent key insert

NOTE

Cylinder and rebate sealing provided on request only.
The handle requires assembly.

INCLUDED ACCESSORIES

which are part of the Univer fire doors:

Closing regulator

- Two-leaved doors include an RC/STD closing regulator to ensure the correct closing sequence of the leaves
- CE marking in conformity with EN 1158 standard

Locking mechanism for secondary leaf

- "Flush-bolt" automatic locking of the secondary leaf
- Lever control for unlocking

Upper coupling system for the secondary leaf

- Secondary leaf lock activated device which inserts rod into the upper strike box
- Upper strike box in black plastic with steel roller

Lower coupling system for the secondary leaf

- Vertical rod with steel point which inserts into lower strike box
- Floor catch (floor-mounted floor catch) made of self-extinguishing black plastic, for doors without threshold
- Floor catch in black plastic with a steel roller, for doors with threshold

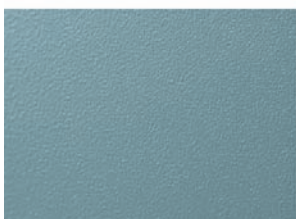
Identification plate

- Metal tag with door identification data, in accordance with current regulations

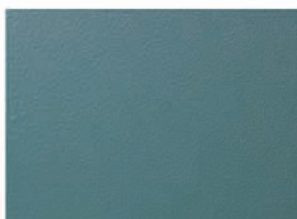


Standard paint - group 01:

leaf color NCS 4020-B50G



frame color NCS 5020-B50G



Finishing

- Standard painted with epoxy-polyester thermoset powders in a 180 degrees oven, orange skin, anti-scratch finishing
- Standard pastel turquoise color, lighter tone for the leaf (NCS4020-B50G), darker tone for the frame (NCS5020-B50G)

Standard packaging

- Single door wrapped into stretchable polyethylene (PE) film
- Assembled doorframes for one-leaved doors
- Assembly required for doorframes for two-leaved doors
- Palletized on wooden pallets

Door weight

class	kg/m ² of wall opening	
	1 leaf	2 leaves
EW 60	23	-
EI,30	34	-
EI,60	36	35
REI 60	34	33
EI,90, REI 120	43	41

NOTE

If the door ever needs to be repainted, follow the precise instructions on the „painting“ section.
The closing regulator requires assembly.

OPTIONAL ACCESSORIES

A wide variety of accessories and surface finishes are available on request for maximum value enhancement of Univer doors to your own specific needs.

The proper accessories can help resolve:

Safety-related needs

- Doors for panic exits (see panic bars)
- Doors for emergency exits (see emergency exit handles)
- Open doors which must be closed in case of fire (see leaf holding systems)

Installation and utilization needs

- Frame extensions
- Drip steel-profile
- Special fastener screws
- Kick and protection plates
- Windows

Access-related control issues

- Electrically-activated lock mechanisms
- Electric handle mechanisms
- Magnetic blocking mechanisms

Performance enhancing

- Sealing
- Cylinders
- Door closers
- Special closing regulators
- Special handles



Customized finishing

- Select finishing from a wide variety of RAL colours
- NDD – Ninz Digital Decor, graphic images applied with special ink jets and protected by a transparent topcoat. Infinite varieties of customizable decorations in harmony with specific door settings
- Stainless steel handles
- Colored handles

Packaging for maximum protection

Sturdy wooden crates protect all doors and related accessories

- For NDD decorated doors
- On construction sites
- During shipping abroad
- For special transport

NOTE

Details on the optional accessories may be found in the following chapters of this brochure:

- Finishing
- Accessories for metal doors
- Panic bars

Right-opening doors are the default selection if opening direction is not specified.

The following optional accessories make Univer doors irreversible, requiring the indication of the door opening direction when the order is placed:

- SLASH panic bar
- Panic bar for secondary leaves
- Windows
- MAC lock
- ELM/cisa and ELM/mt electric handle
- Special locks (016 tir- Stel 15)

WINDOW WITH FIRE RATED GLASS

Upon request all one- and two-leaved fire doors, excluding those EW 60 and EI₂30 rated, may be equipped with round or rectangular windows with fire rated stratified glass and respective window frames fixed with screws. The window frame carter is included for round window and available as an optional accessory for the rectangular one. Windows not possible for one-leaved REI doors with FM L (wall opening) above 1167mm.

Limits prescribed by standard

According to standards UNI 9723 and EN 1634-1, windows may be smaller but not larger than the test sample size, and the reverse holds true for the border strip around the window which may be wider but not thinner. The following limits correspond with these restrictions.

Borders, window position

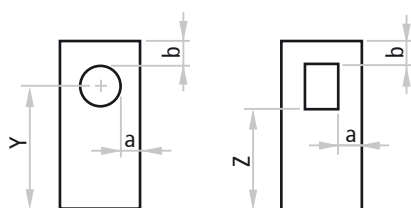
"Border measurement" refers to the distance from the edge of the window to the wall opening of the door.

Elevation for round windows

window size	FM H	position
Ø 300	minimum 2050	Y=1600
Ø 300	less than 2050	Y=FM H - 450
Ø 400	minimum 2150	Y=1600
Ø 400	from 2050 to 2149	Y=1550
Ø 400	less than 2050	Y=FM H - 500

Elevation for rectangular windows

window dimensions L x H	FM H	position
250/300 x 400	minimum 2150	Z=1450
250/300 x 400	from 2050 to 2149	Z=1350
250/300 x 400	less than 2050	Z=FM H - 700

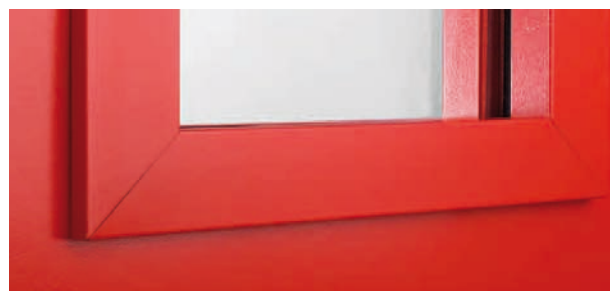


Window thickness

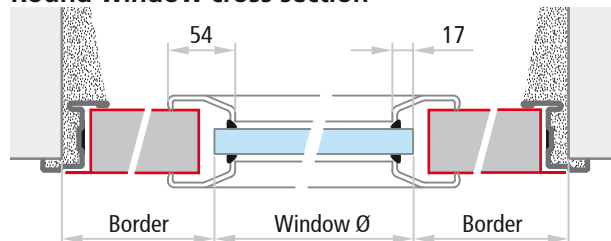
EI ₂ 60, REI 60	21 mm	EI ₂ 90	37 mm	REI 120	53 mm
----------------------------	-------	--------------------	-------	---------	-------

NOTE

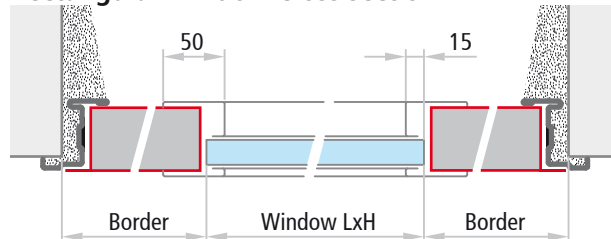
The positions indicated above are those standard. Different positions may be considered as long as they respect the minimum "a" and "b" border strips. The window itself may not be supplied separately except for replacements. It is always advisable for doors with windows to be equipped with door closers for controlled closing.



Round window cross section



Rectangular window cross section



ATTENTION

Fire rated windows become opaque on exposure to temperatures of 40 degrees or higher, or when installed outside and exposed to UV radiation. Minor aesthetic imperfections or tiny air bubbles do not compromise the fire resistance of the glass, and do not constitute grounds for claims. For special instructions and recommendations for fire windows, see the "Notices" reported on the last page of the window accessories section of the present brochure.